

# MONTHLY MEMBERSHIP PROGRESS REPORT

LOCATION INDIANA

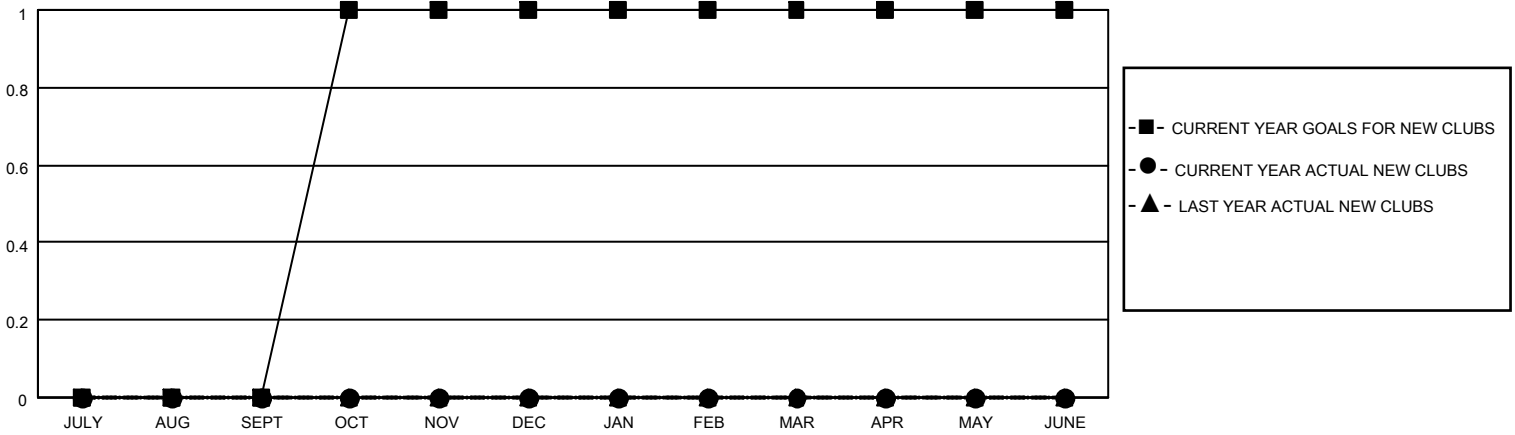
District 25 G

Results as of: 11/30/2022

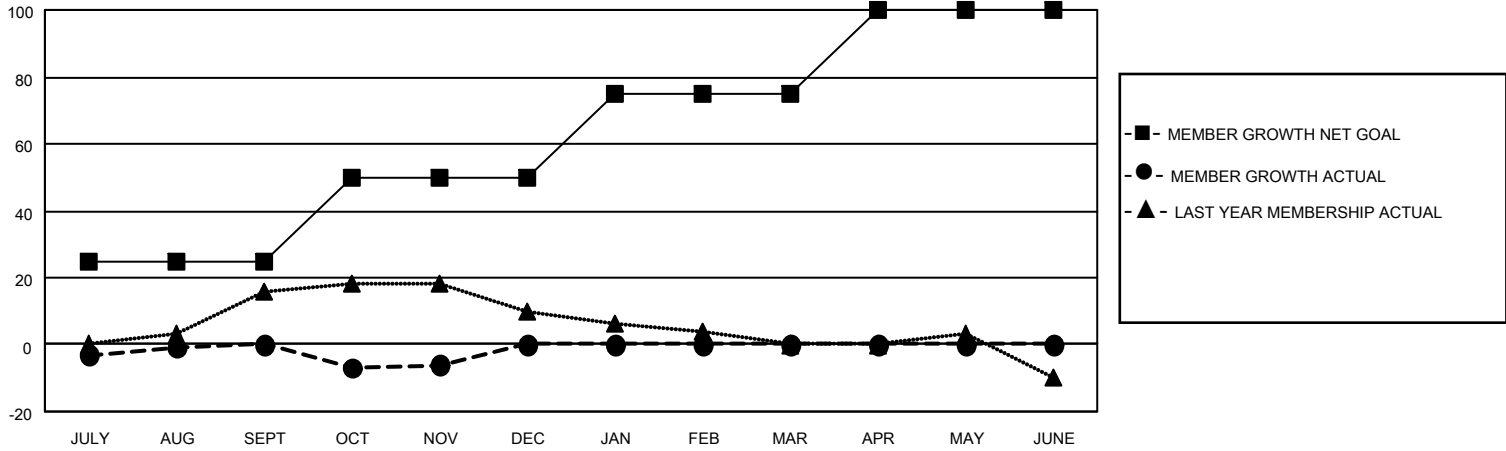
Clubs			
RESULTS FOR 2022-2023			
QUARTER	NEW CLUB GOAL	NEW CLUBS	DROPPED CLUBS
JULY/AUG/SEPT	0	0	0
OCT/NOV/DEC	1	0	0
JAN/FEB/MAR	0	0	0
APR/MAY/JUNE	0	0	0

Members			
RESULTS FOR 2022-2023			
QUARTER	MEMBER GROWTH NET GOAL	MEMBER GROWTH ACTUAL	DROPPED MEMBERS ACTUAL (including transfers)
JULY/AUG/SEPT	25	22	20
OCT/NOV/DEC	25	12	17
JAN/FEB/MAR	25	0	0
APR/MAY/JUNE	25	0	0

**GOALS AND ACTUAL NEW CLUBS CUMULATIVE**



**GOALS AND ACTUAL MEMBERS CUMULATIVE**



**DROPPED CLUBS: 0**

**19 CLUBS OF 48 ADDED 1 OR MORE NEW MEMBERS**

**GENDER DISTRIBUTION**

MALE	851 (68.35%)
FEMALE	394 (31.65%)
NON BINARY	0 (0.00%)
PREFER NOT TO ANSWER	0 (0.00%)

**DROPPED MEMBERS**

[CLICK HERE FOR CUMULATIVE MEMBERSHIP DATA](#)

DECEASED	11
CLUB CANCELLED	0
OTHER	26
<b>TOTAL</b>	<b>37</b>

TOTAL FAMILY UNIT MEMBERS	280
FAMILY MEMBERS PAYING HALF DUES	142